



# STRUCTURE CABLING







# About us

**MICROLINK NETWORKS** is an independently-owned company HQ based in Houston. We have been supplying solutions to the telecommunications, hospitality, security, automation industry for over decades and has grown from what was once a small company to become a major industry player. This growth enables us to consistently offer you the best performing solutions based with our high-value products and full-line support. We built our reputation on them to provide superior inter-connectivity product designs and solutions for you. We stand behind our mission statement.

## Made in the USA

**We** are committed to quality products, with the most advanced features and capabilities for our customers. Most of our products are designed and manufactured in the United States. A subset of our products are designed in the US but assembled elsewhere.







## INFRASTRUCTURE



## DATA CENTERS



## POWER DISTRIBUTION







# INFRASTRUCTURE

**Microlink Networks** Infrastructure Solutions support commercial and residential networks around the world with an unparalleled selection of high-performance passive infrastructure products.

**We** understand the importance of readying your infrastructure for higher speed, better scalability, and lower total cost. Whether you're an enterprise, a multi-tenant, commercial, a service provider or a data center, we at **MICROLINK** can provide you with the finest end-to-end solutions to transform your current facility into the connected and efficient infrastructure of tomorrow.



FIBER SYSTEM



COPPER SYSTEM



CABLES



# FIBER SYSTEM



## SINGLE/MULTIMODE FIBER OPTIC PATCH CORD

High quality zirconia ferrules.  
Good repeatability and interchangeability.  
Connectors LC, SC, ST, FC, LSH, MTRJ, MU.  
Flame-retardant, rugged and durable jacket.  
Printing helps clarify and recognize different cables.  
Factory terminated and tested.  
25 years system warranty.  
Bend Insensitive construction.  
Os1 & Os2 are available



## SINGLE/MULTIMODE FIBER OPTIC PIGTAILS

Tested on optical performance insertion loss and return Loss.  
0.9mm cable for high density splicing applications.  
UPC and APC polish type.  
PVC jacket as default, OFNP and LSZH are optional.  
Tight buffer for easy fusion or mechanical splicing.  
25 years system warranty.  
LC, ST, SC, FC and LSH are available.





## FIBER OPTIC SLIDING PATCHPANEL

Multimode/Singlemode options available.  
Choice of port density.  
Management and fixing kit included.  
Sliding drawer on ball bearing runners.  
Recessed panel bracket mounting.  
Up to 48FO in 1U space.  
Fits standard 19" rack.  
4 Rear Cable entries.



## MICRO ODF OUTLET 2-4 PORTS

Tested on optical performance insertion loss and return Loss.  
0.9mm cable for high density splicing applications.  
UPC and APC polish type.  
PVC jacket as default, OFNP and LSZH are optional.  
Tight buffer for easy fusion or mechanical splicing.  
25 years system warranty.  
LC, ST, SC, FC and LSH are available.



## ADAPTORS

Tested on optical performance insertion loss and return Loss.  
SC and LC versions  
UPC and APC polish type.  
Complies with IEC, TIA and Telcordia standards.  
High precision alignment sleeve.  
Low insertion loss and high repeatability.  
Dust Caps Included.  
25 years system warranty.



# COPPER SYSTEM

## COPPER PATCH LEADS



### CHOICE OF COLORS



**MICROLINK** Patch cords are specifically designed and manufactured to deliver robust standards-based performance ensuring optimum bandwidth for today's high-speed network applications. The patch cord is double shielded, which is ideal use in external interference environment.

### FEATURES

- ✓ Gold plated contact pins
- ✓ Independently verified
- ✓ Snag-less Connectors
- ✓ ETL certified channel test
- ✓ Backward compatible
- ✓ 24AWG premium grade copper conductor
- ✓ Connection between wall outlets or equipment's
- ✓ Networks running up to 250MHz applications
- ✓ Conform to IEC, EIA-TIA performance requirements
- ✓ 25 Year system warranty

### CATOGRIES:

CAT-6 F/UTP  
CAT-6 U/UTP  
CAT-6A S/FTP  
CAT-6A U/UTP  
CAT-7 S/FTP  
CAT-8 S/FTP



## KEYSTONE JACK

**MICROLINK** Category 6 tool free RJ-45 keystone jacks exceed the transmission line performance requirements of IEC and TIA for CLASS E/Category 6 systems. Each Category 6 tool free RJ-45 keystone jacks comply with IEC 60603-7-4/5 (shielded)/(unshielded) and support all applications designed for CLASS E networks, as defined within ISO/IEC 11801 (2nd Edition):2010 including ATM 1200, 1000BASE-T (Gigabit Ethernet) and 1G FCBASE-T.

### CATOGRIES:

CAT6 STP KEYSTONE JACK  
CAT6 UTP KEYSTONE JACK  
CAT6A STP KEYSTONE JACK  
CAT6A UTP KEYSTONE JACK



- ✓ Easy and fast tool free termination
- ✓ Fits all keystone style face plates and floor boxes
- ✓ Suitable for modular screened patch panel installation
- ✓ Choice of colour
- ✓ Mounts in shutter
- ✓ 25 Year system warranty





MICROLINK's new CAT7/8 modular jack designed by the fully zinc die-casting housing eliminate the alien crosstalk successfully. The slim impact CAT7/8 Ethernet telecommunication connector can be applied with 1U 48 port feed-through high density panel in one rack unit

## FEATURES

- ✓ Fits for 1U 24port and 1U 48 port keystone panel.
- ✓ Reliable and stable quality.
- ✓ GHMT CAT.7/8 channel performance verified.
- ✓ 25 Year system warranty
- ✓ Support Class E/category 7/8 standards networks
- ✓ Terminates 24AWG to 26AWG cables
- ✓ 360° Screen die cast housing
- ✓ Toolless termination design



## 1U/2U UNLOADED CHROME PATCH PANEL

- ✓ 19" rack mountable
- ✓ Earthing kit, cage nuts and mini cable ties included
- ✓ Connection between wall outlets or equipment's
- ✓ Support up to 24port in 1U height
- ✓ Supplied with rear cable managers and fixings
- ✓ Choice of category
- ✓ Choice of port density
- ✓ Available in black or chrome
- ✓ Compatible with all categories of UTP & STP keystone jacks



## HIGH DENSITY UNIVERSAL PATCH PANEL

- ✓ 0.5U & 1U design
- ✓ 19" rack mountable
- ✓ Support up to 24-48 port
- ✓ Supplied with rear cable managers and fixings
- ✓ Compatible with all categories of UTP & STP keystone jacks
- ✓ Choice of category
- ✓ Choice of port density
- ✓ Earthing kit, cage nuts and mini cable ties included
- ✓ Connection between wall outlets or equipments



## PRODUCT DESCRIPTION

24 AWG copper wire insulated with Polyethylene. Two insulated conductors twisted together to form a pair and four such pairs laid up to form the core unit jacketed with flame retardant PVC/LSZH. Enhanced performance cable enables delivering high speed network.

## FEATURES

### Flame Rating

PVC-CM/CMR/CMX

LSZH-IEC 60332-1; IEC 60754 1&2; IEC 61034-2

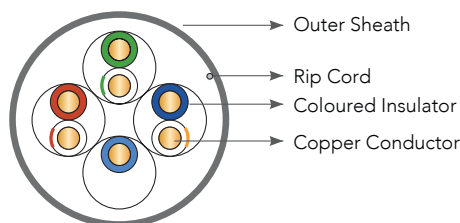
Specified and tested upto 100MHz

Compliant to American Standard ANSI/TIA 568-C.2,

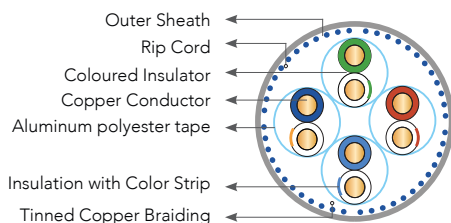
International Standard ISO/IEC 11801 Class D

25 years system warranty available

## CAT 5E U/UTP



## CAT 5E S/UTP



## PRODUCT DESCRIPTION

24 AWG copper wire insulated with Polyethylene. Two insulated conductors twisted together to form a pair and four such pairs covered by a Aluminum foil polyester tape, core unit overall braided with ATC, jacketed with flame retardant PVC/LSZH. Enhanced performance cable enables delivering high speed network.

## FEATURES

### Flame Rating

PVC-CM

LSZH-IEC 60332-1; IEC 60754 1&2; IEC 61034-2

Very good RFI/EMI interference attenuation to enable installation to high electrical noise locations

Specified and tested upto 100MHz

Compliant to American Standard ANSI/TIA 568-C.2,

International Standard ISO/IEC 11801 Class D

25 years system warranty available

## PRODUCT DESCRIPTION

24 AWG copper wire insulated with Polyethylene. Two insulated conductors twisted together to form a pair and four such pairs laid up to form the core unit covered with a Aluminum Polyester tape, overall jacketed with PVC/LSZH. Enhanced performance cable enables delivering high speed.

## FEATURES

### Flame Rating

PVC-CM

LSZH-IEC 60332-1; IEC 60754 1&2; IEC 61034-2

Very good RFI/EMI interference attenuation to enable installation to high electrical noise locations

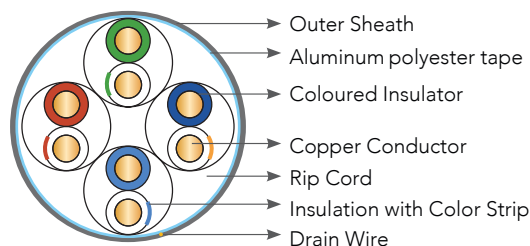
Specified and tested upto 100MHz

Compliant to american standard ANSI/TIA 568-C.2,

International standard ISO/IEC 11801 Class D

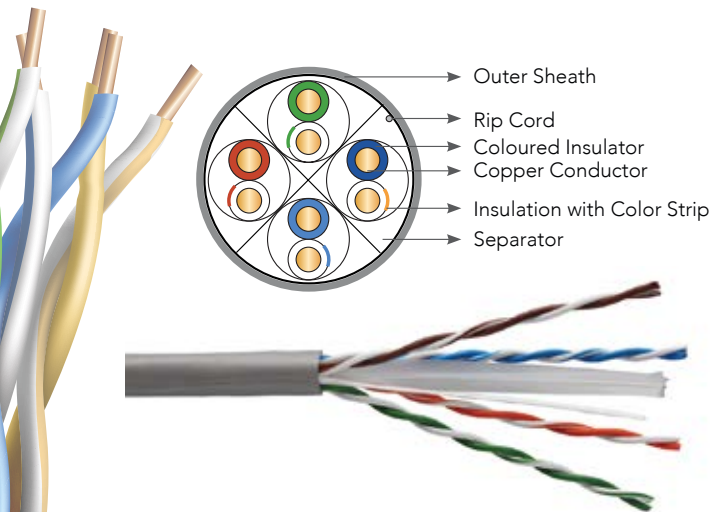
25 years system warranty available

## CAT 5E F/UTP





# CAT 6 U/UTP



## PRODUCT DESCRIPTION

24/23 AWG copper wire insulated with Polyethylene. Two insulated conductors twisted together to form a pair and four such pairs separated by a cross filler form the core unit jacketed with flame retardant PVC/LSZH. Enhanced performance cable enables delivering high speed network.

## FEATURES

### Flame Rating

PVC-CM/CMR/CMX

LSZH-IEC 60332-1; IEC 60754 1&2; IEC 61034-2

Specified and tested upto 250MHz or higher if required

Compliant to American Standard ANSI/TIA 568-C.2,

International Standard ISO/IEC 11801 Class E

25 years system warranty available

## PRODUCT DESCRIPTION

23 AWG copper wire insulated with Polyethylene. Two insulated conductors twisted together to form a pair and four such pairs covered by a Aluminum polyester tape, core unit overall braided with ATC, jacketed with flame retardant PVC/LSZH. Enhanced performance cable enables delivering high speed network.

## FEATURES

### Flame Rating

LSZH-IEC 60332-1; IEC 60754 1&2; IEC 61034-2

Specified and tested upto 250 MHz or higher if required.

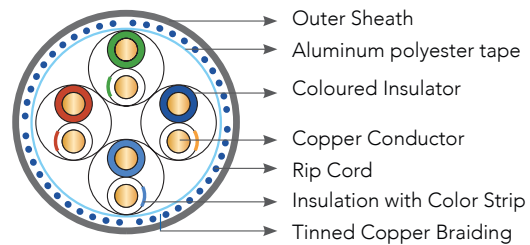
Excellent RFI/EMI interference attenuation to enable installation in high electrical noise locations.

Compliant to American Standard ANSI/TIA 568-C.2,

International Standard ISO/IEC 11801 Class E

25 years system warranty available

# CAT 6 S/FTP



## PRODUCT DESCRIPTION

23 AWG copper wire insulated with Polyethylene. Two Insulated conductors twisted together to form a pair and four such pairs separated by a cross filler form the core unit covered with a Aluminum Polyester tape, overall jacketed with flame retardant PVC/LSZH. Enhanced performance cable enables delivering high speed network.

## FEATURES

### Flame Rating

LPVC-CM

LSZH-IEC 60332-1; IEC 60754 1&2; IEC 61034-2

Specified and tested upto 250MHz

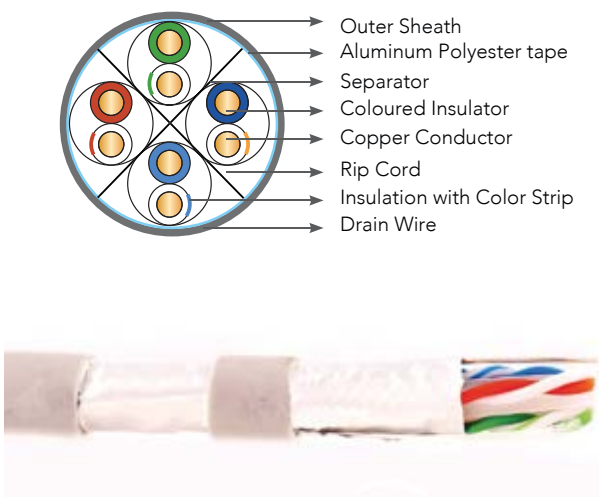
Very good RFI/EMI interference attenuation to enable installation in high electrical noise locations.

Compliant to American Standard ANSI/TIA 568-C.2,

International Standard ISO/IEC 11801 Class E

25 years system warranty available

# CAT 6 F/UTP



## PRODUCT DESCRIPTION

23 AWG copper wire insulated with Polyethylene. Two insulated conductors twisted together to form a pair and four such pairs separated by a cross filler form the core unit jacketed with flame retardant PVC/LSZH. Enhanced performance cable enables delivering high speed network.

## FEATURES

### Flame Rating

PVC-CM

LSZH-IEC 60332-1; IEC 60754 1&2; IEC 61034-2

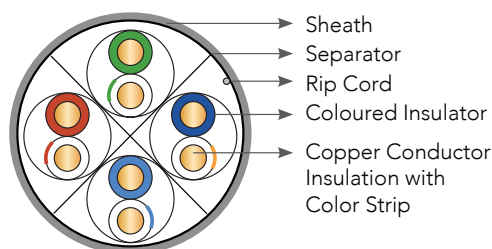
Specified and tested upto 500MHz

Compliant to American Standard ANSI/TIA 568-C.2,

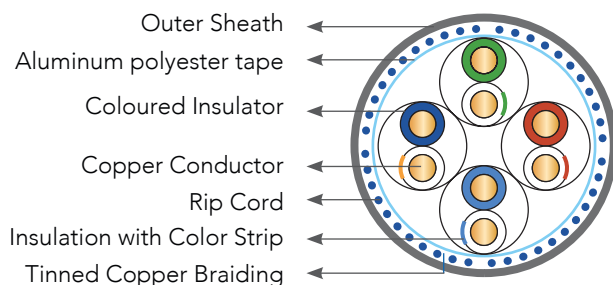
International Standard ISO/IEC 11801 Class E

25 years system warranty available

## CAT 6A U/UTP



## CAT 6A S/FTP



## PRODUCT DESCRIPTION

23 AWG copper wire insulated with Polyethylene. Two insulated conductors twisted together to form a pair and four such pairs covered by a Aluminum foil polyester tape, core unit overall braided with ATC, jacketed with flame retardant PVC/LSZH. Enhanced performance cable enables delivering high speed network.

## FEATURES

### Flame Rating

LSZH-IEC 60332-1; IEC 60754 1&2; IEC 61034-2

Specified and tested upto 500MHz or higher if required. Excellent RFI/EMI interference attenuation to enable installation in high electrical noise locations.

Compliant to American Standard ANSI/TIA 568-C.2, International Standard ISO/IEC 11801 Class E

25 years system warranty available

## PRODUCT DESCRIPTION

23 AWG copper wire insulated with Polyethylene. Two insulated conductors twisted together to form a pair and four such pairs separated by a cross filler form the core unit, overall covered with a Aluminum Polyester tape, jacketed with flame retardant PVC/LSZH. Enhanced performance cable enables delivering high speed network.

## FEATURES

### Flame Rating

PVC-CM

LSZH-IEC 60332-1; IEC 60754 1&2; IEC 61034-2

Very good RFI/EMI interference attenuation to enable installation in high electrical noise locations.

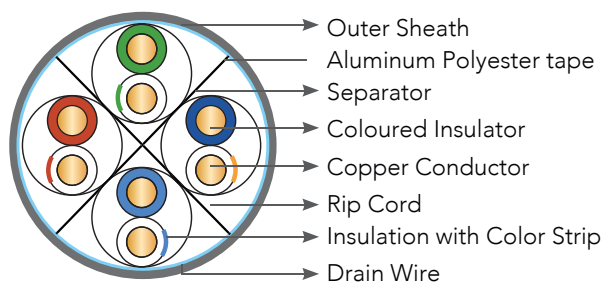
Specified and tested upto 500MHz

Compliant to American Standard ANSI/TIA 568-C.2,

International Standard ISO/IEC 11801 Class E

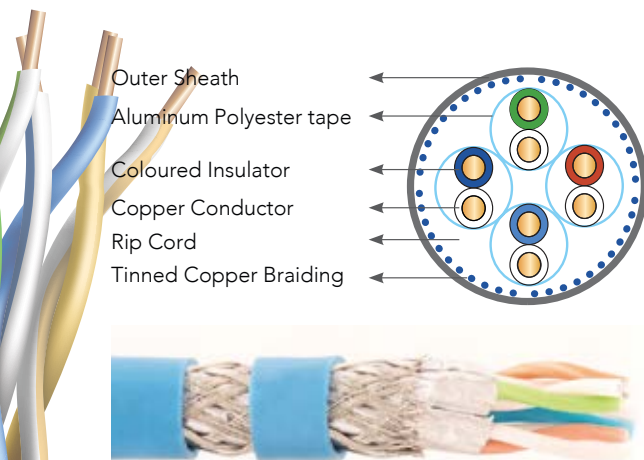
25 years system warranty available

## CAT 6A F/UTP





# CAT 7A S/FTP



## PRODUCT DESCRIPTION

23 AWG copper wire insulated with Foam Skin Polyethylene. Two insulated conductors twisted together to form a pair and four such pairs covered by a Aluminum Polyester tape form the core unit overall braided with ATC, jacketed with flame retardant PVC/LSZH. Enhanced performance cable enables delivering high speed.

## FEATURES

### Flame Rating

LSZH-IEC 60332-1; IEC 60754 1&2; IEC 61034-2  
Excellent RFI/EMI interference attenuation to enable installation in high electrical noise locations.  
Specified and tested upto 600MHz  
Compliant to ISO/IEC 11801 Class F  
25 years system warranty available

## PRODUCT DESCRIPTION

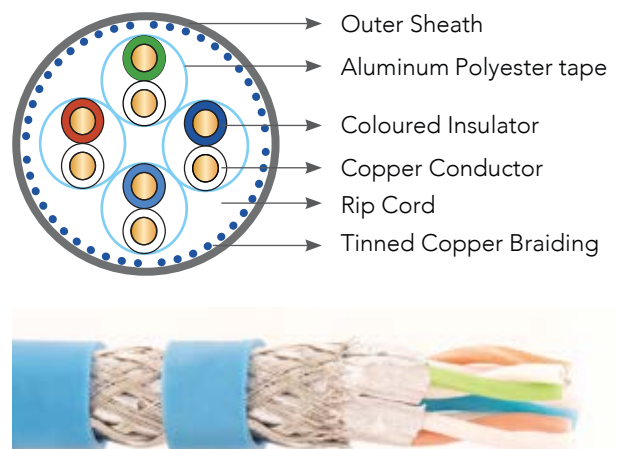
22 AWG copper wire insulated with Polyethylene. Two insulated conductors twisted together to form a pair and four such pairs covered by a Aluminum Polyester tape form the core unit overall braided with ATC, jacketed with flame retardant PVC/LSZH. Enhanced performance cable enables delivering high speed network.

## FEATURES

### Flame Rating

LSZH-IEC 60332-1; IEC 60754 1&2; IEC 61034-2  
Specified and tested upto 1000MHz  
Excellent RFI/EMI interference attenuation to enable installation in high electrical noise locations.  
Compliant to ISO/IEC 11801 Class F  
25 years system warranty available

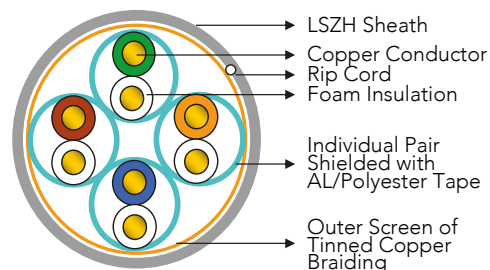
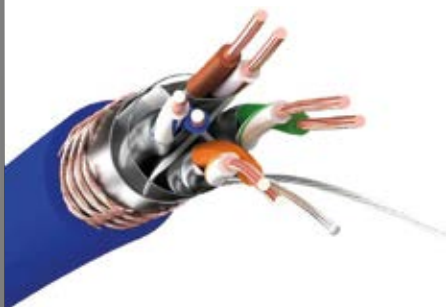
# CAT 7 S/FTP



# CAT 8 S/FTP

## APPLICATION

- All Ethernet applications which includes 10/100/1000 Base T or 1000 Base TX, 10 G Base - T, 25G and 40G Base -T
- Suitable for switch to server connection in Data Centers application till 2000 MHz
- 30 Meter Channel performance complied to ANSI/TIA 568C.2.1





# FIBRE OPTIC CABLE

## SINGLEMODE FIBER OPTIC CABLE

### FIBER OPTIC, DROP CABLE INDOOR, 2-4 FIBERS

#### FEATURES AND BENEFITS

- ✓ Fiber-count 2 and 4 fibers
- ✓ Robust and lightweight
- ✓ LSZH jacket for internal use
- ✓ Lightweight construction
- ✓ Suitable for tight corners and bends
- ✓ Compact diameter
- ✓ Color-coded fibers for easy identification
- ✓ Compatible with field terminated connectors
- ✓ Standard cable length of 2km



### FIBER OPTIC, DROP CABLE OUTDOOR, 2-4 FIBERS

#### FEATURES AND BENEFITS

- ✓ Fiber-count 2 and 4 fibers
- ✓ Single mode options available
- ✓ Compact cable construction
- ✓ FRP strength member
- ✓ Suitable for tight corners and bends
- ✓ Metal messenger wire
- ✓ Individually colored optical fibers
- ✓ Conforms to IEC, TIA and Telcordia standards
- ✓ Standard cable length of 2km



### FIBER OPTIC CABLE ARMoured LOOSE TUBE

#### FEATURES AND BENEFITS

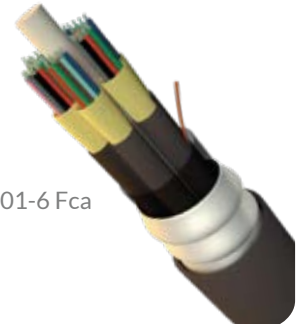
- ✓ Fiber type Single mode 9/125µm
- ✓ Number of Cores 4-24
- ✓ Category OS2
- ✓ Armouring protection
- ✓ Rodent resistant Yes
- ✓ Outer sheath material Copolymer
- ✓ Reaction-to-fire class a- EN 13501-6 Eca
- ✓ Halogen free (acc. EN 60754-1/2)
- ✓ Flame retardant In accordance with EN 50399
- ✓ Outer diameter approx. 9.2 mm



### FIBER OPTIC CABLE MULTI ARMoured LOOSE TUBE

#### FEATURES AND BENEFITS

- ✓ Fiber type Single mode 9/125µm
- ✓ Number of Cores 48-288
- ✓ Category OS2
- ✓ Armouring protection
- ✓ Rodent resistant
- ✓ Outer sheath colour Black
- ✓ Reaction-to-fire class - to EN 13501-6 Fca
- ✓ Outer diameter approx. 10.5 mm

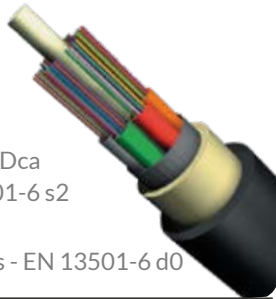




## FIBER OPTIC CABLE, EXTERNAL MULTI LOOSE TUBE

### FEATURES AND BENEFITS

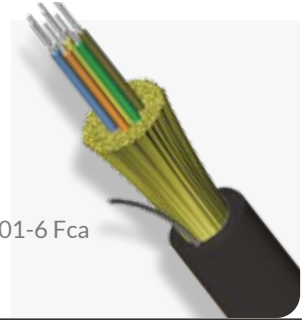
- ✓ Fiber type Single mode 9/125µm
- ✓ Number of Cores 4-288
- ✓ Category OS2
- ✓ Outer sheath material Copolymer
- ✓ Rodent resistant
- ✓ Outer sheath colour Black
- ✓ Reaction-to-fire class - EN 13501-6 Dca
- ✓ Smoke development class - EN 13501-6 s2
- ✓ Euro class acidity - EN 13501-6 a1
- ✓ Euro class flaming droplets/particles - EN 13501-6 d0



## FIBER OPTIC CABLE TIGHT BUFFERES CABLE

### FEATURES AND BENEFITS

- ✓ Fiber type Single mode 9/125µm
- ✓ Number of Cores 48-288
- ✓ Category OS2
- ✓ Armouring protection
- ✓ Rodent resistant
- ✓ Outer sheath colour Black
- ✓ Reaction-to-fire class - to EN 13501-6 Fca
- ✓ Outer diameter approx. 10.5 mm



## MULTIMODE FIBER OPTIC CABLE

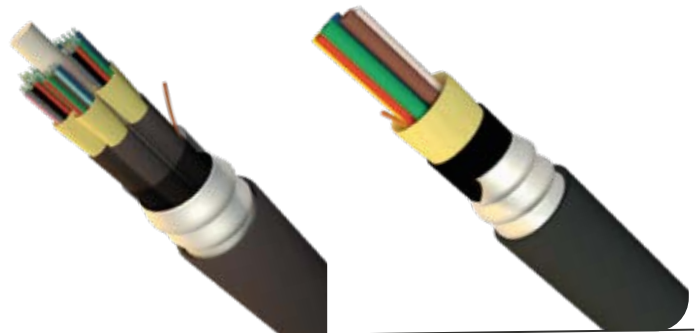
### Multimode 50/125µm Fiber Optic Armoured Loose Tube

MICROLINK's Corrugated Steel Tape (CST) OM2 50/125µm armoured loose tube optical fiber cables have been designed specifically for applications requiring a high degree of mechanical protection. These compact, lightweight cables are extremely rugged, provide rodent resistance and are quick and easy to install.

Our cables are constructed around a silica gel filled tube(s) containing up to 24 colour coded 250µm buffered fibers, which is covered with E-glass strength members.

### FEATURES AND BENEFITS

- ✓ Fiber type Multimode 50/125µm
- ✓ Number of Cores 4 - 24
- ✓ Category OM2, OM3, OM4, OM5
- ✓ Armouring protection
- ✓ Rodent resistant Yes
- ✓ Outer sheath material Copolymer
- ✓ Reaction-to-fire class a- EN 13501-6 Eca
- ✓ Halogen free (acc. EN 60754-1/2)
- ✓ Flame retardant In accordance with EN 50399



### Multimode 50/125µm Fiber Optic Tight Buffered

MICROLINK's OM2 50/125µm tight buffered optical fibre cables have been designed specifically for internal and external applications. These compact, lightweight cables are extremely flexible and are quick and easy to install.

### FEATURES AND BENEFITS

- ✓ Fibre type Multi mode 50/125µm
- ✓ Number of Cores 4 - 24
- ✓ Category OM2, OM3, OM4, OM5
- ✓ Outer sheath material Copolymer
- ✓ Rodent resistant
- ✓ Outer sheath colour Black
- ✓ Reaction-to-fire class - EN 13501-6 Dca
- ✓ Smoke development class - EN 13501-6 s2
- ✓ Euro class flaming droplets/particles - EN 13501-6 d0



### Multimode 50/125µm Fiber Optic Loose Tube Cable

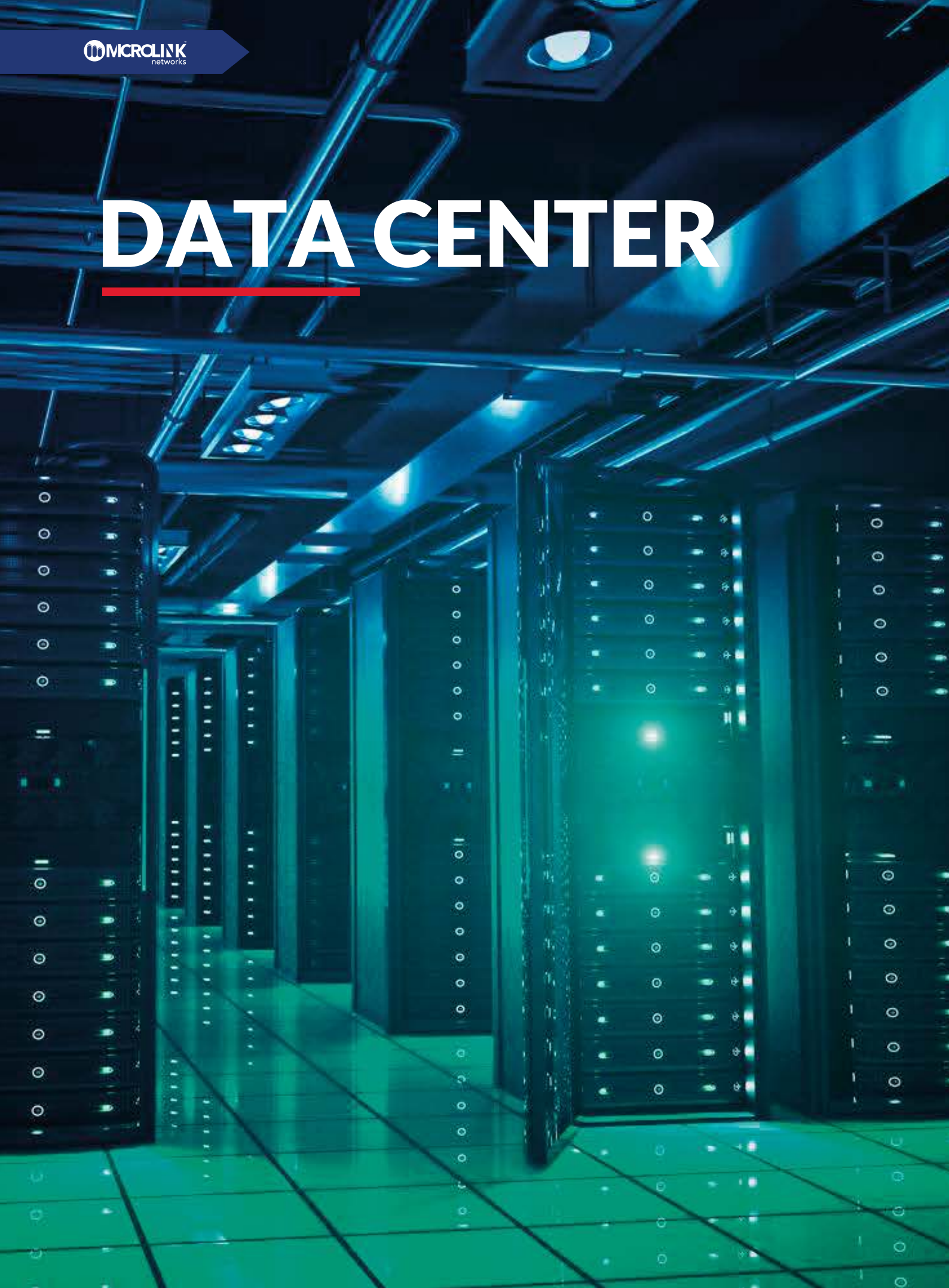
MICROLINK's OM2, OM3 and OM4 50/125µm loose tube optical fibre cables have been designed specifically for internal and external applications. These compact, lightweight cables are extremely flexible and are quick and easy to install.

### FEATURES AND BENEFITS

- ✓ Fibre type Multimode 50/125µm
- ✓ Number of Cores 4 - 24
- ✓ Category OM2, OM3, OM4, OM5
- ✓ Outer sheath material Copolymer
- ✓ Rodent resistant
- ✓ Outer sheath colour Black
- ✓ Reaction-to-fire class - EN 13501-6 Dca
- ✓ Smoke development class - EN 13501-6 s2
- ✓ Euro class flaming droplets/particles - EN 13501-6 d0



# DATA CENTER

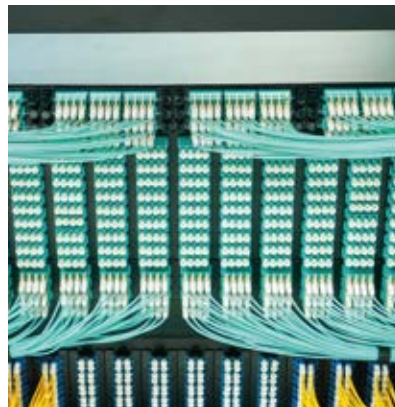




# DATA CENTER

From consolidation and cost control to quick deployment and zero downtime, you can count on **Microlink Networks** to help you solve your data center challenges.

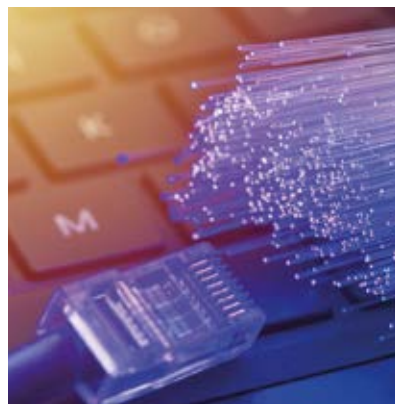
Whether your data center is in the cloud, on a campus, global, local, commercial or government, making it faster, more reliable and more efficient is what matters most. We're focused on helping you keep your data center up and running - efficiently and effectively - through the use of our innovative solutions and products.



## ULTRA HIGH DENSITY PANELS



## PRE-TERMINATED MPO/MTP

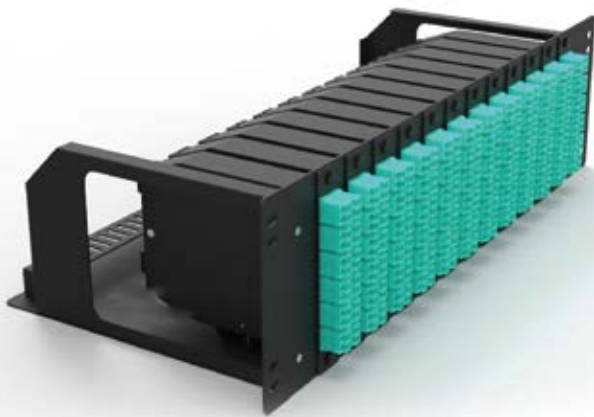
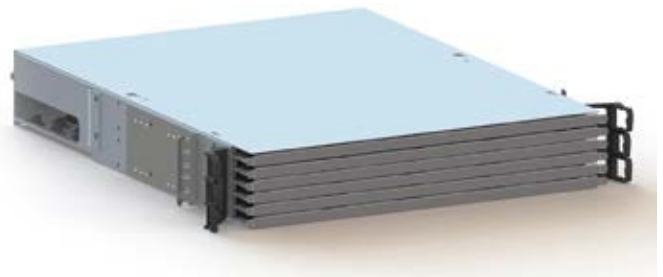


## PRE-TERMINATED TRUNKS

# ULTA HIGH DENSITY PANEL

## FEATURES AND BENEFITS

- ✓ Available in 1U, 2U and 4U height variants
- ✓ Most efficient rack utilization (72 x ports per 1U)
- ✓ Fast installation of modules from front or rear
- ✓ Fast moves, adds and changes (lower OPEX)
- ✓ Easy and fast migration to 40G, 100G and beyond
- ✓ Future-proofed with super low-loss connectivity
- ✓ Wide range of modules (MPO-LC transition, pigtail splicing, patching, tap-monitoring and MPO conversion)
- ✓ Excellent patch cord routing and guidance
- ✓ Clear port identification and traceability
- ✓ Robust and secure steel construction



## FEATURES AND BENEFITS

- ✓ Robust and reliable
- ✓ Uses industry approved 19" design and LGX style modules
- ✓ Flexible, multi-functional solution for different types of connectivity
- ✓ High Density combined with ease of installation and maintenance
- ✓ No disturbance of existing connections during installation or re-work
- ✓ Recess able mounting brackets





# PRE-TERMINATED MPO-MTP

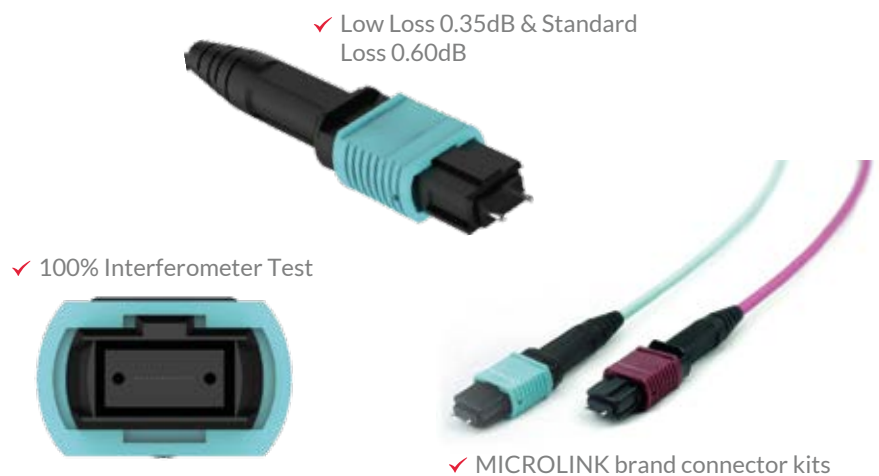
**MICROLINK** MPO/MTP Trunk Cables are designed for high density application which offers excellent benefits in terms on-site installation time and space saving. The trunk cable assemblies are used in data center, telecom and backbone application for 10-100G connectivity. **MICROLINK's** MPO trunk cables are factory pre-terminated, tested and packed along with test reports.

## FEATURES AND BENEFITS

- ✓ High performance in IL & RL
- ✓ Insertion Loss 0.35dB
- ✓ 100% 3D Test
- ✓ IEC 61754-7 and TIA/EIA 604-5
- ✓ Compliant for MPO/MTP interfaces
- ✓ 12-144 cores available

## APPLICATIONS

- ✓ Data Center Cabling
- ✓ High-Density Cross Connect
- ✓ Backbone Installations
- ✓ 40G-100G Interconnection



✓ Low Loss 0.35dB & Standard Loss 0.60dB

✓ 100% Interferometer Test

✓ MICROLINK brand connector kits

## MPO-MPO 12F Elite Low Loss Singlemode Trunk Patch Cable

MPO trunk patch cable, a cost-effective alternative to time-consuming field termination, is designed for high-density fiber patching in data centers which need space saving and reduce cable management troubles. MPO trunk type & fanout type is for 40G QSFP+ SR4/CSR4, 100G QSFP28 SR4 optics direct connection and high-density data center applications, 12-144cores are available.

# PRE-TERMINATED COPPER TRUNK CABLE

---

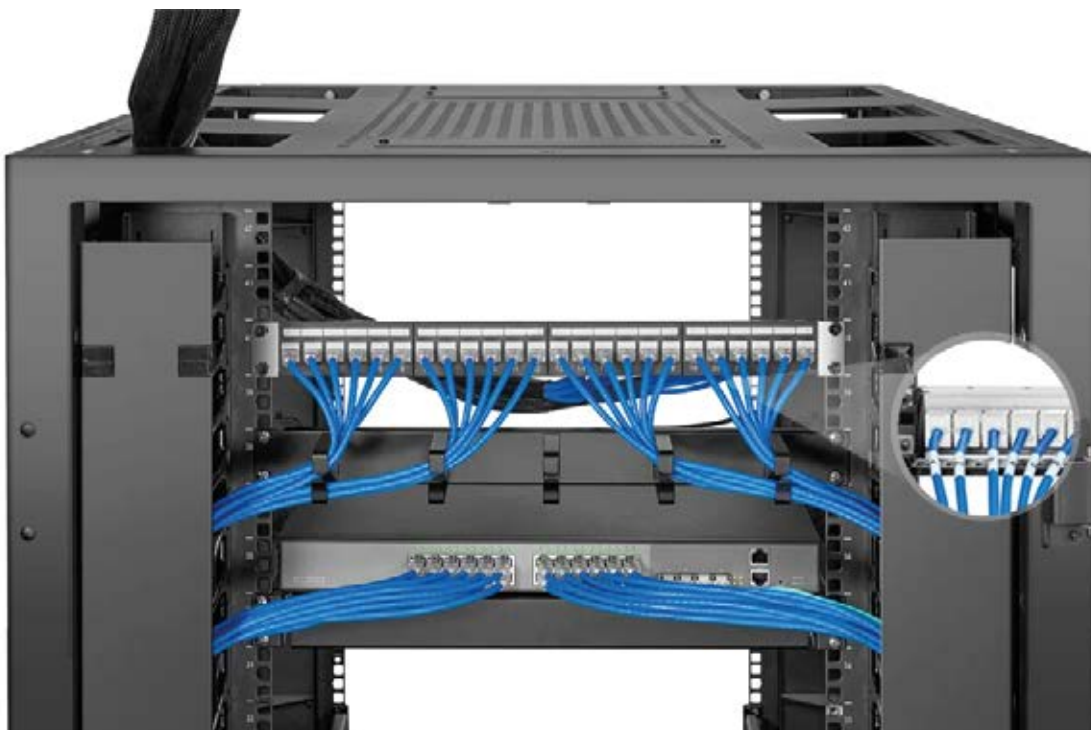
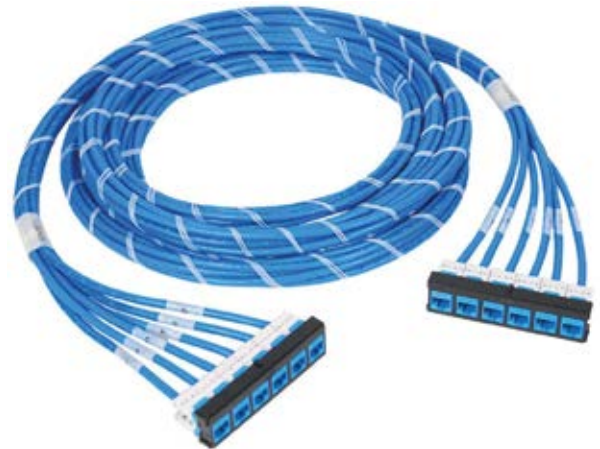


# Pre-terminated copper trunk cable

Pre-Terminated trunking cable assemblies are designed to improve efficiency and reduce labor cost and waste in large infrastructures with high-density cross-connection and patching systems. Based on the highest performing cabling systems available, supporting 1Gigabit speeds. 12 loose jack modules on both ends of assembly for simple plug and play installation.

## FEATURES AND BENEFITS

- ✓ Available in Jack to Jack and Plug to Plug
- ✓ High-quality Snagless Plug
- ✓ Braided Mesh
- ✓ Tested Cable Assemblies
- ✓ Fast and easy installation with reduced labor cost.
- ✓ Each trunk assembly receives an individual identification number.



# POWER DISTRIBUTION

---



# Power Distribution

Here at **Microlink Networks**, we have a large line of standard power distribution products including Vertical PDUs, Rack Mount PDUs, Power Distribution Enclosures, as well as accessories such as bus bars, grounding kits, and power cables. We also specialize in custom power solutions that may be specific to your application. We promotes greater efficiency in data centers and offers a line of power management options to suit your needs.



## Vertical PDUs



## Rack Mount PDUs



## Power Distribution Enclosures



# VERTICAL PDUS

---





# Vertical PDUs

Custom and standard vertical power strips designed to complement our server rack and rackmount enclosures with the same quality and flexibility.

Vertical power strips offer power distribution solutions for any equipment enclosure. Customers are able to optimize power consumption with specific and high-end power distribution capabilities, while minimizing power cabling for best performance.

## Features

- All of our Power Distribution Units are ETL approved
- Completely adaptable vertical and rack mount units and box sizes can be designed to fit any mounting application
- Input power options include via cord and plug, input receptacle or hardwire terminal blocks
- Single phase 120V, 208 and 230V, 120/208 3-phase, up to 100A
- Various input and power cord solutions
- Output receptacles can be accommodated including all NEMA straight and twist lock styles, as well as IEC320 C13 and C19, in any combination
- Over-current alarm LEDs
- Standard RMS and “peak” level metering with options for RS232/RS485 interface
- All power strips are ETL/UL60950 cabled and tested

## Additional Option

- Standard and custom configurations
- Custom Silk Screening
- Color coding



# RACK PDUS



# Rack PDUs

Server rack power strips are available standard or custom to complement our enclosures and are designed with the same quality and flexibility.

Rack mount power strips provide the ability to deliver specific and/or high-end power distribution to each equipment enclosure. Customers are able to optimize power consumption, minimize power cabling and decrease points of failure.

## Features

- All of our PDUs are ETL approved
- Vertical and rack mount units, box sizes, and designs can be adapted to any mounting application
- Input power via cord and plug, input receptacle or hardwire terminal blocks
- Single phase 120V, 208 and 230V, 120/208 3-phase, up to 100A
- Multiple input and power cord solutions
- A Virtually all output receptacles can be accommodated including all NEMA straight and twist lock styles, as well as IEC320 C13 and C19, in any combination
- Over-current alarm LEDs
- Standard RMS metering along with “peak” level metering with options for RS232/RS485 interface
- All power strips are ETL/UL60950 cabled and tested

## Additional Option

- Standard and custom configurations
- Custom Silk Screening
- Color coding



# POWER DISTRIBUTION ENCLOSURE

---



# Power Distribution Enclosure (PDE)

Data center managers, facility managers and design engineers now have a power distribution system available that will reduce circuit costs, increase flexibility and complement reliability improvements.

MICROLINK Power Distribution Enclosures (PDE) with integrated wire management reduces seal tight cable costs and the need for external raceways. The wire management is located in the lower front and rear of the Power Distribution Enclosures and server cabinets for easy access to power circuits. Additional enclosures can easily be added to an existing row. Traditional bottom or top cable landings serve non-adjacent Microlink Enclosures, various brand enclosures and stand alone systems. The Microlink Power Distribution Enclosures with integrated wire management can be installed in raised floor, reduced height floor and non-raised floor environments.

## Features

- Patented aluminum extruded 6063-T5 welded frame with steel doors and panels rated at 2,500 LBS with bolt down base
- Matches popular Martin Enclosures
- Durable powder coat finish
- Designed for In Row data center applications
- Height and depth of PDE can vary to match server cabinets
- Locking front and rear doors
- Delivered assembled and tested
- Removable access panels
- 84 or 168 breaker positions
- 200% rated neutral
- Universal panel boards
- Easy access cable management in lower front and rear of enclosures
- Top and/or bottom cable landing
- ETL listed
- 84 breaker position enclosure
- 168 breaker position enclosure
- Reduces the amount of expensive seal tight cables required
- Reduces labor for installing new circuits
- Reduces under floor and overhead cable clutter
- Can expand existing power distribution systems
- Increases cooling airflow under raised floor
- Easier to add server cabinets to existing row
- Can be used in raised floor, reduced height and non-raised floor applications
- Supports contractor installed receptacles feeding vertical plug strips in server cabinets
- Supports better cable housekeeping
- A single PDE can feed non-adjacent rows with the wire management feature
- Available in input configurations for:
  - 208/120v, WYE 3-phase, up to 225A
  - 400/230v, WYE 3-phase, up to 225A
  - 480v DELTA to 208/120v WYE 3-phase, up to 45 kva







#### **USA & CANADA**

Tel: +1-877-6774040  
[info@microlinknet.com](mailto:info@microlinknet.com)

Williams Tower, 41st Floor, 2800 Post  
Oak Boulevard, Houston, TX 77056, USA

#### **EUROPE**

Tel: +44-203-835-2255  
[uk@microlinknet.com](mailto:uk@microlinknet.com)

86-90 Paul Street, London, England,  
United Kingdom, EC2A 4NE

#### **MIDDLE EAST**

Tel: +971-4-556-1557  
[mena@microlinknet.com](mailto:mena@microlinknet.com)

Boulevard Plaza Tower One, Level 3,  
Downtown Dubai, United Arab Emirates